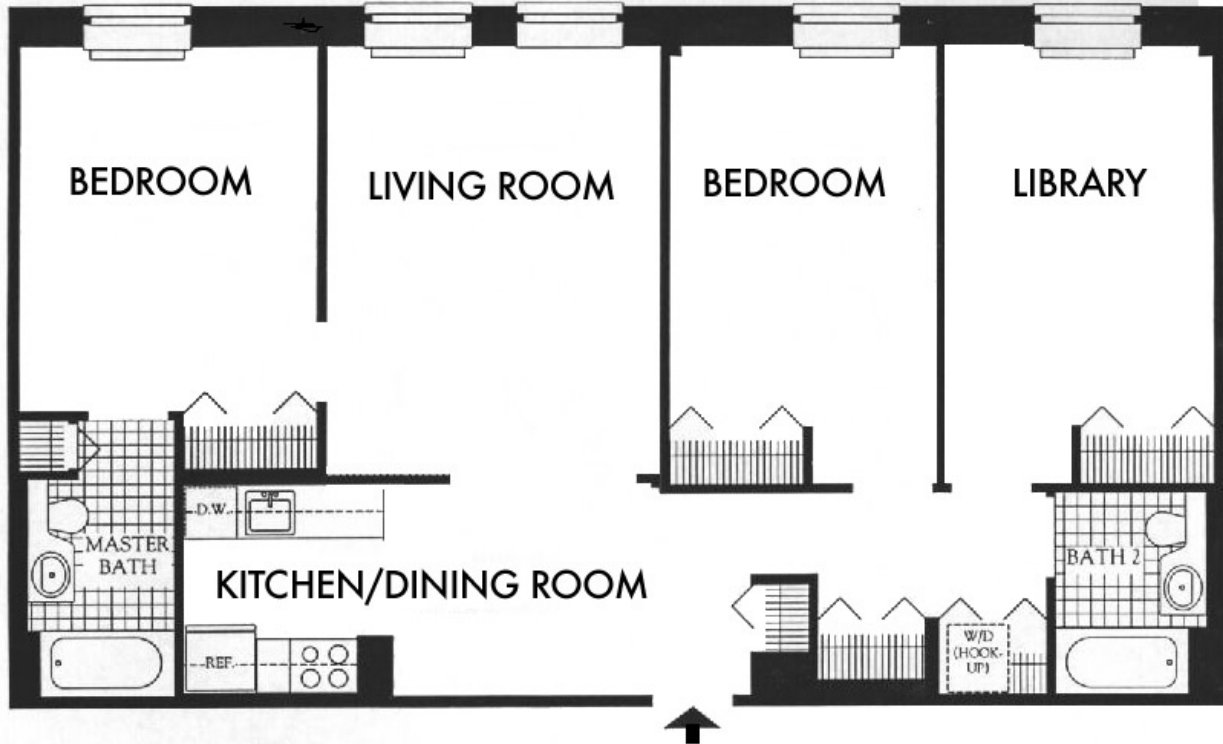


archkitecture



FLOOR PLAN DRAWINGS

What is a floor plan? It is an architectural drawing that illustrates each floor of a structure and features the location and size of rooms, windows, doors, walls, stairs, and fixtures.

- How many rooms are there? _____
- How many bathrooms are there? _____
- How many closets are there? _____
- How many windows are there? _____

Color in the room and show where you would put the furniture.
If you want, you can use these furniture symbols in the floor plan.

